



**I HAVE INHABITED A PLACE** frequented by artists making their art ...

**BY DOUG SPOWART**



**I HAVE INHABITED A PLACE** where artists worked using brushes, palette knives, paints, canvas, printing presses,  
papers, inks and pigments

**I STOOD BEFORE** paint encrusted easels and backboards where the painter's masterpiece had been  
extracted leaving behind over-painted brush marks

**I HAVE SEEN** the splashed paint that trickled down the wall in the artist's driven,  
obsessed and frantic quest for creative resolution

**I SAT AT A TABLE** where a sumptuous feast once took place, evidenced  
by the dribbles, splatters and spill-rings from dishes and bowls

**I HAVE WALKED ON A FLOOR** decorated with dappled paint  
And what I saw were the stars of the Milky Way...

**I STOOD IN THIS SPACE AS A PHOTOGRAPHER**

And **WHAT I SAW** on the surfaces and the furniture of the studio **WAS A LANDSCAPE**

— not a landscape in the sense of mountains, sky, rivers and trees but rather a landscape of the mind

A Stieglitz equivalent — **A SIMULACRUM** or **MAYBE SOMETHING ELSE ...?**

Could it be I was directed to photograph by **ANOTHER FORCE ...?**







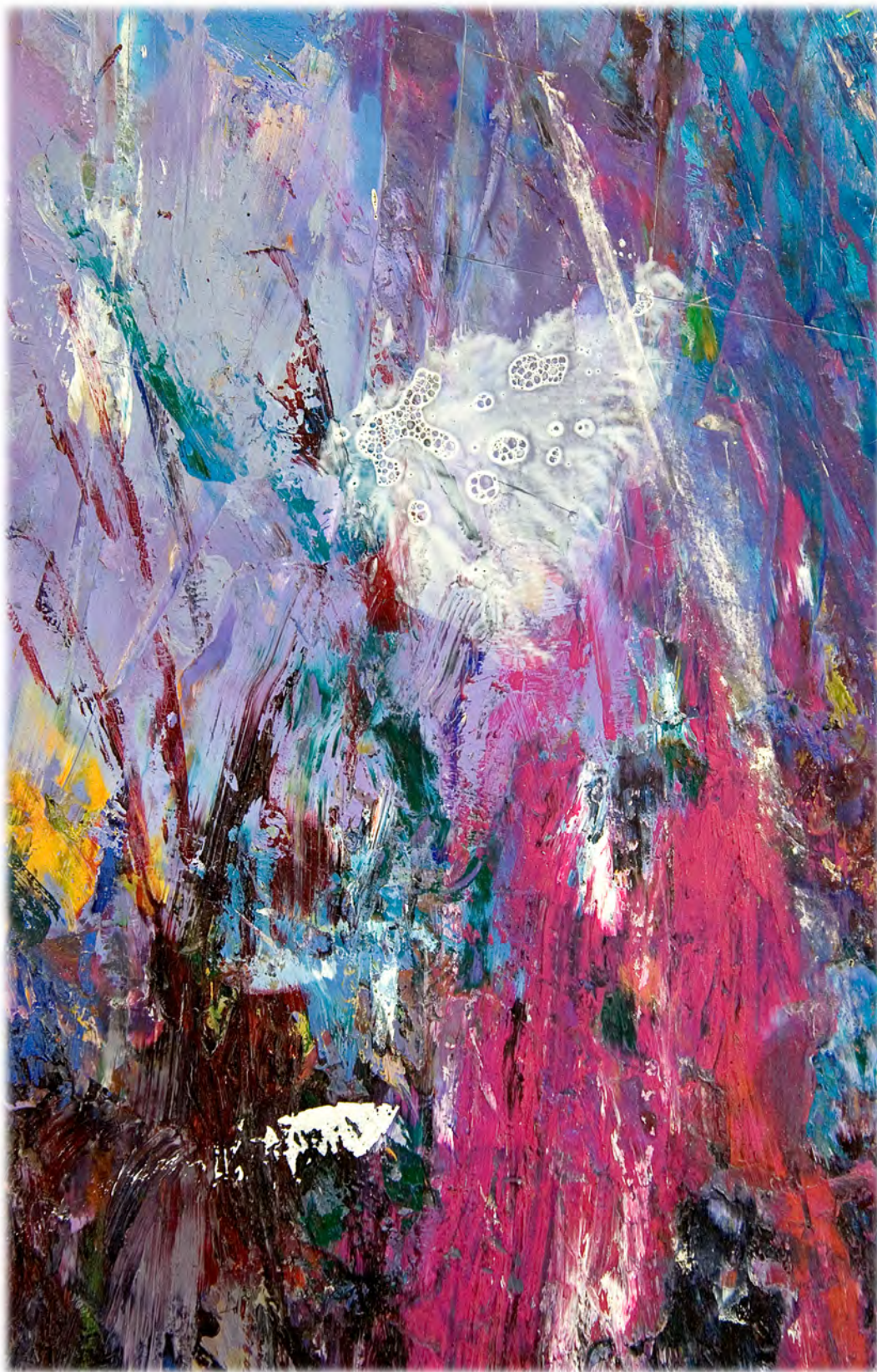












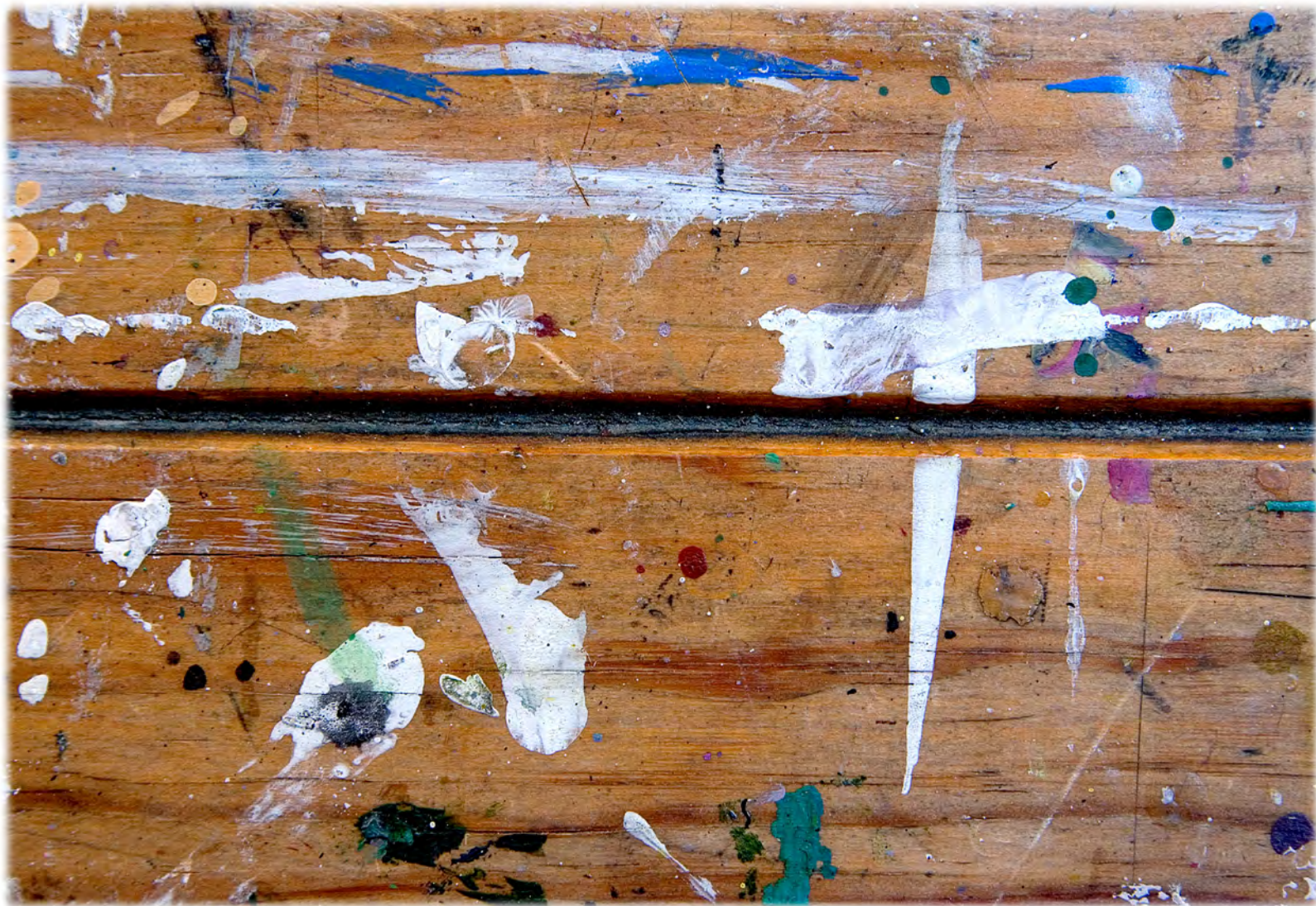








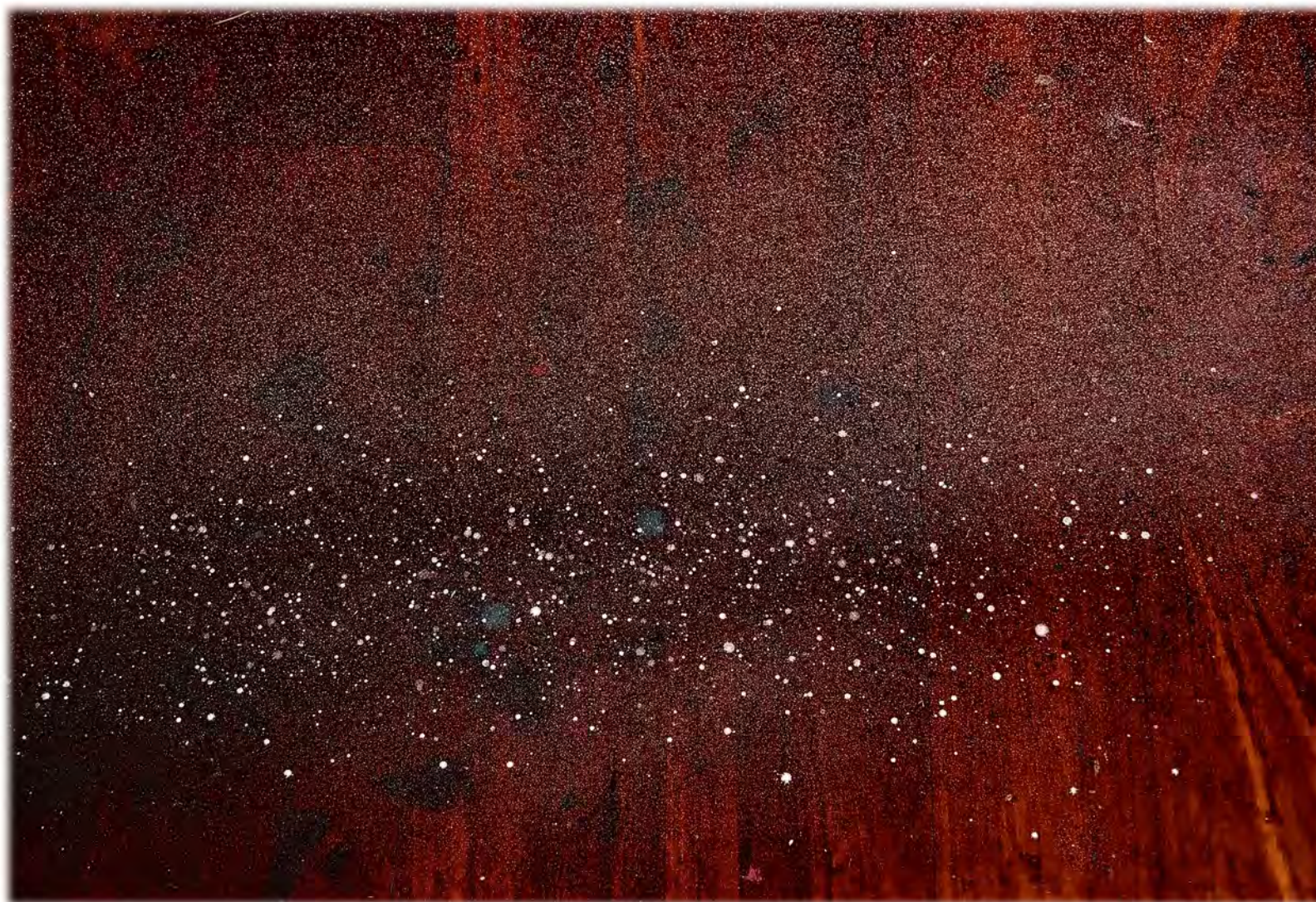




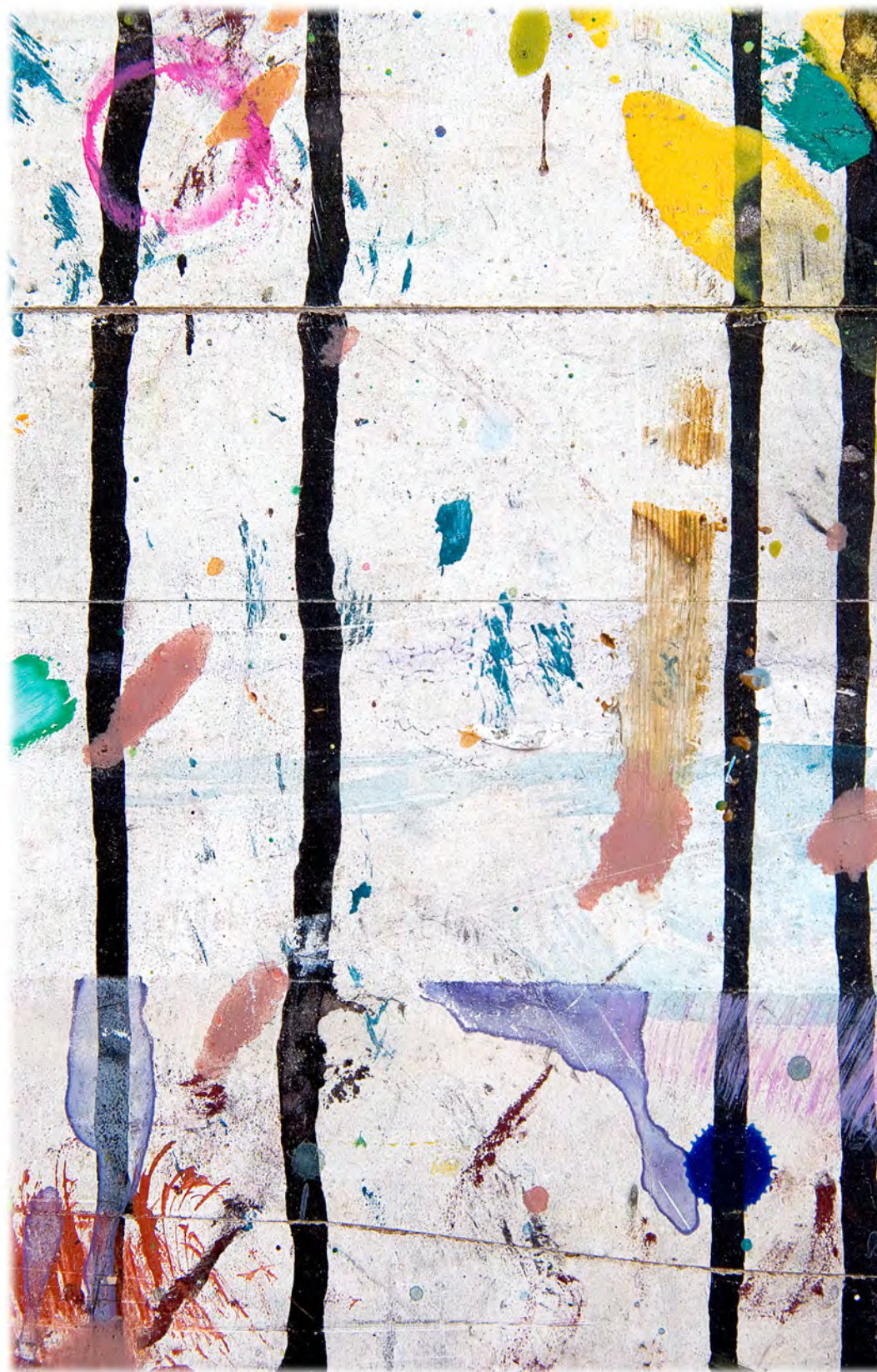


























**I THOUGHT THAT THESE PHOTOS WERE MY VIEW OF THIS SPACE** as a seeker responding to what was there...

**BUT** in my photography **I WAS BEING DIRECTED BY ANOTHER**

— I realised that **THE INCIDENTAL MARKS** the artists left behind **WERE IN FACT ORPHANS**

**I FELT THEIR LOSS**, as siblings separated, one chosen (the artwork), the other left behind

**I EMPATHISED WITH THESE DAUBS**

— I cared for them in ways that the artist who made them never did  
I imagined their faces and heard their voices...

**AND THEY REVEALED THEMSELVES TO ME...**



**THESE WERE NOT JUST MY PHOTOGRAPHS**

I came to realise that **THESE IMAGES CARRIED ANOTHER MESSAGE**

– **THE NARRATIVE OF THE ORPHANED ARTWORKS**

Although rejected and separated from the artist's masterpiece

I found that in their collaboration with me they became whole again

**EMPOWERED BY THE CREATIVE SPIRIT OF ART.**











Concept, Photographs, Prose, Design & Production

Doug Spowart

BLURB EDITION

Inspired by, and created during, an artist in residence at



PRINTED ON  
HP Indigo Digital Press

FONTS  
Futura+Gill Sans + Abadi Families

PUBLISHED BY



P.O. Box 1455 Toowoomba, Queensland 4350, AUSTRALIA

© March 2015



