

Wildcards

Bill Henson shuffles the deck

Monash Gallery of Art
1 February–30 March 2014

www.mga.org.au



BOWNESS FAMILY
FOUNDATION



- 1 **Laurence LE GUAY**
Australia 1917–1990
Aboriginal girls, Central Australia c. 1970
gelatin silver print
Monash Gallery of Art, City of Monash Collection
acquired 1993
MGA 1993.01
- 2 **Mark STRIZIC**
born Germany 1928; arrived Australia 1950; died 2012
The Block Arcade, January 1967 1967
gelatin silver print, printed 1994
Monash Gallery of Art, City of Monash Collection
donated by the Bowness Family through the Australian
Government's Cultural Gifts Program 2008
MGA 2008.105
- 3 **David MOORE**
Australia 1927–2003
Himalaya at dusk, Sydney 1950
gelatin silver print, printed 2005
Monash Gallery of Art, City of Monash Collection
donated by the Estate of David Moore 2006
MGA 2006.44
- 4 **David MOORE**
Australia 1927–2003
Newcastle steelworks 1963
gelatin silver print
Monash Gallery of Art, City of Monash Collection
acquired 1981
MGA 1981.01
- 5 **David MOORE**
Australia 1927–2003
Erskin Street and AWA Tower c. 1947
gelatin silver print, printed 2005
Monash Gallery of Art, City of Monash Collection
donated by the Estate of David Moore 2006
MGA 2006.51
- 6 **Leonie REISBERG**
born Australia 1955
Portrait of Peggy Silinski, Tasmania c. 1976
gelatin silver print
Monash Gallery of Art, City of Monash Collection
donated by Janice Hinderaker through the Australian
Government's Cultural Gifts Program 2003
MGA 2003.02



- 7 **Beverley VEASEY**
born Australia 1968
Study of a Calf, *Bos taurus* 2006
chromogenic print
Monash Gallery of Art, City of Monash Collection
acquired 2006
MGA 2006.34
- 8 **John WILKINS**
born Australia 1946
Semaphore Surf Life Saving Club 1980
sepia-toned gelatin silver print
Monash Gallery of Art, City of Monash Collection
acquired 1981
MGA 1982.10
- 9 **John WILKINS**
born Australia 1946
Old factory, Geelong 1983
sepia-toned gelatin silver print
Monash Gallery of Art, City of Monash Collection
acquired 1983
MGA 1983.50
- 10 **Bronwyn WRIGHT**
born Australia 1955
Storm 2003
from the series *Nickelodeon car*
chromogenic print
Monash Gallery of Art, City of Monash Collection
donated by Patrick Corrigan through the Australian
Government's Cultural Gifts Program 2008
MGA 2008.206
- 11 **Darren SYLVESTER**
born Australia 1974
On holiday 2010
chromogenic print
Monash Gallery of Art, City of Monash Collection
donated by the artist 2013
MGA 2013.041
- 12 **Norman LINDSAY**
Australia 1879–1970
Model at door c. 1911
gelatin silver print, printed 2000
Monash Gallery of Art, City of Monash Collection
donated by Katherine Littlewood 2000
MGA 2000.13



13 **Laurie WILSON**

Australia 1920–80

Point Lonsdale 1975

gelatin silver print

Monash Gallery of Art, City of Monash Collection

donated through the Australian Government's Cultural Gifts Program 2012

MGA 2012.061



14 **Norman LINDSAY**

Australia 1879–1970

Model kneeling on bedding holding pole with raised cloak

c. 1911

gelatin silver print, printed 2000

Monash Gallery of Art, City of Monash Collection

donated by Katherine Littlewood 2000

MGA 2000.25



15 **Wesley STACEY**

born Australia 1941

Untitled c. 1975–80

from the series *Mumbulla set*

gelatin silver print

Monash Gallery of Art, City of Monash Collection

donated through the Australian Government's Cultural Gifts Program by Christine Godden 2011

MGA 2011.134



16 **Norman LINDSAY**

Australia 1879–1970

Model reading c. 1911

gelatin silver print, printed 2000

Monash Gallery of Art, City of Monash Collection

donated by Katherine Littlewood 2000

MGA 2000.07



17 **Cherine FAHD**

born Australia 1974

Alicia 2003

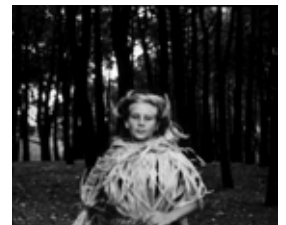
from the series *A woman runs*

gelatin silver print

Monash Gallery of Art, City of Monash Collection

donated through the Australian Government's Cultural Gifts Program 2011

MGA 2012.008



18 **James McARDLE**

born Australia 1950

Jeremy's stubbornness 1990

from the series *The tilted plane*

gelatin silver print

Monash Gallery of Art, City of Monash Collection

acquired 1990

MGA 1990.26



- 19 **Sue FORD**
Australia 1943–2009
Marlene, Cottles Bridge, Victoria 1964
gelatin silver print
Monash Gallery of Art, City of Monash Collection
acquired 1982
MGA 1983.01
- 20 **Rod STEWART**
dates unknown
Untitled (portrait of Athol Shmith) 1985
gelatin silver print
Monash Gallery of Art, City of Monash Collection
donated by Mary Anne Hartley 1999
MGA 1999.04.1
- 21 **Tim JOHNSON**
born Australia 1947
Light performances 1971–72
gelatin silver print
Monash Gallery of Art, City of Monash Collection
acquired 2011
MGA 2011.061.4
- 22 **Tim JOHNSON**
born Australia 1947
Light performances 1971–72
gelatin silver print
Monash Gallery of Art, City of Monash Collection
acquired 2011
MGA 2011.061.2
- 23 **Axel POIGNANT**
born United Kingdom 1906; arrived Australia 1926; died 1986
Jack and his family on the Canning Stock Route 1942
gelatin silver print, printed 1986
Monash Gallery of Art, City of Monash Collection
acquired 1991
MGA 1991.52
- 24 **Robert WHITAKER**
born United Kingdom 1939; Australia 1961–64
died United Kingdom 2011
Martin Sharp and twins, 1967 1967
gelatin silver print, printed 2002
Monash Gallery of Art, City of Monash Collection
acquired 2004
MGA 2004.08



- 25 **David MOORE**
Australia 1927–2003
Pitjantjatjara children, Ernabella, South Australia 1963
silver dye bleach print
Monash Gallery of Art, City of Monash Collection
acquired 1990
MGA 1990.07



- 26 **David TATNALL**
born Australia 1955
Forest, Crows Foot Track, Rodger River, East Gippsland, Victoria 1986
gelatin silver print, printed 1988
Monash Gallery of Art, City of Monash Collection
donated by the artist 1995
MGA 1995.05



- 27 **Mark HINDERAKER**
born United States of America 1946; arrived Australia 1970
died 2004
Fiona Hall 1984
gelatin silver print
Monash Gallery of Art, City of Monash Collection
donated by Janice Hinderaker through the Australian Government's Cultural Gifts Program 2003
MGA 2003.03



- 28 **Wesley STACEY**
born Australia 1941
Untitled c. 1975–80
from the series *Mumbulla set*
gelatin silver print
Monash Gallery of Art, City of Monash Collection
donated through the Australian Government's Cultural Gifts Program by Christine Godden 2011
MGA 2011.130



- 29 **Unknown**
Untitled c. 1900
cyanotype print
Monash Gallery of Art, City of Monash Collection
acquired 2012
MGA 2012.104



- 30 **Mark STRIZIC**
born Germany 1928; arrived Australia 1950; died 2012
Pride of possession – 2, 1971 1971
gelatin silver print
Monash Gallery of Art, City of Monash Collection
donated by the Bowness Family through the Australian Government's Cultural Gifts Program 2008
MGA 2008.118



- 31 **Lionel LINDSAY**
Australia 1874–1961
Norman Lindsay and Rose Soady, Bond Street studio c. 1909
gelatin silver print, printed 2000
Monash Gallery of Art, City of Monash Collection
donated by Katherine Littlewood 2000
MGA 2000.31



- 32 **George J MORRIS**
Australia 1884–1959
Still life c. 1942
gelatin silver print
Monash Gallery of Art, City of Monash Collection
donated through the Australian Government's Cultural
Gifts Program by Richard King in memory of Murray
Stewart Smith 2008
MGA 2008.318



- 33 **John EATON**
born United Kingdom 1881; arrived Australia 1889; died 1967
Sheep in clearing c. 1920s
gelatin silver print
15.6 x 23.8 cm
Monash Gallery of Art, City of Monash Collection
donated by Janice Hinderaker through the Australian
Government's Cultural Gifts Program 2003
MGA 2003.04



- 34 **Peter LAWRENCE**
born United Kingdom 1882; Australia 1922–47
died United Kingdom 1970
Mid-day c. 1925
bromoil transfer
25.0 x 26.2 cm
Monash Gallery of Art, City of Monash Collection
donated through the Australian Government's Cultural
Gifts Program by Richard King in memory of Murray
Stewart Smith 2008
MGA 2008.284



- 35 **Peter LAWRENCE**
born United Kingdom 1882; Australia 1922–47
died United Kingdom 1970
Moving up c. 1926
bromoil transfer
Monash Gallery of Art, City of Monash Collection
donated through the Australian Government's Cultural
Gifts Program by Richard King in memory of Murray
Stewart Smith 2008
MGA 2008.286



- 36 **Unknown**
Norman Lindsay with dogs and ship model c. 1911
gelatin silver print, printed 2000
Monash Gallery of Art, City of Monash Collection
donated by Katherine Littlewood 2000
MGA 2000.30



- 37 **Tim JOHNSON**
born Australia 1947
Light performances 1971–72
gelatin silver print
Monash Gallery of Art, City of Monash Collection
acquired 2011
MGA 2011.061.3



- 38 **Norman LINDSAY**
Australia 1879–1970
Rose Soady with friend (in hat) c. 1911
gelatin silver print, printed 2000
Monash Gallery of Art, City of Monash Collection
donated by Katherine Littlewood 2000
MGA 2000.39



- 39 **Brian THOMPSON**
born Australia 1939
Untitled c. 1978
gelatin silver print
Monash Gallery of Art, City of Monash Collection
donated through the Australian Government's Cultural
Gifts Program by Christine Godden 2011
MGA 2011.106



- 40 **Norman LINDSAY**
Australia 1879–1970
Semi draped model with Romanesque urn c. 1911
gelatin silver print, printed 2000
Monash Gallery of Art, City of Monash Collection
donated by Katherine Littlewood 2000
MGA 2000.17



- 41 **Brian THOMPSON**
born Australia 1939
Untitled 1978
gelatin silver print
Monash Gallery of Art, City of Monash Collection
donated through the Australian Government's Cultural
Gifts Program by Christine Godden 2011
MGA 2011.101



42 **Keith WINGROVE**

Australia 1910–95

Norman Lindsay and dog c. 1950s

gelatin silver print

Monash Gallery of Art, City of Monash Collection

donated by Katherine Littlewood 2000

MGA 2000.42V



43 **Norman LINDSAY**

Australia 1879–1970

Rose Soady as nude model on horse c. 1911

gelatin silver print, printed 2000

Monash Gallery of Art, City of Monash Collection

donated by Katherine Littlewood 2000

MGA 2000.35



44 **David MOORE**

Australia 1927–2003

Pile driver, Pyrmont docks 1948

gelatin silver print

Monash Gallery of Art, City of Monash Collection

acquired 1985

MGA 1985.25



45 **Mark STRIZIC**

born Germany 1928; arrived Australia 1950; died 2012

Port Kembla BHP steel casting, 1959 1959

gelatin silver print

Monash Gallery of Art, City of Monash Collection

donated by the Bowness Family through the Australian

Government's Cultural Gifts Program 2008

MGA 2008.125



46 **Mark STRIZIC**

born Germany 1928; arrived Australia 1950; died 2012

BHP steel mill, Port Kembla, 1959 1959

gelatin silver print, printed 1999

Monash Gallery of Art, City of Monash Collection

donated by the Bowness Family through the Australian

Government's Cultural Gifts Program 2008

MGA 2008.124



47 **Norman LINDSAY**

Australia 1879–1970

Rose Soady in water c. 1911

gelatin silver print, printed 2000

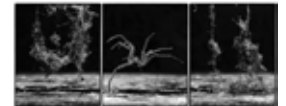
Monash Gallery of Art, City of Monash Collection

donated by Katherine Littlewood 2000

MGA 2000.37



- 48 **Mark STRIZIC**
 born Germany 1928; arrived Australia 1950; died 2012
Forging 1963-style 1963
 gelatin silver print, printed 1996
 Monash Gallery of Art, City of Monash Collection
 donated by the artist 2002
 MGA 2002.11
- 49 **Trent PARKE**
 born Australia 1971
Wiluna, WA 2004
 from the series *Minutes to midnight* 2003–04
 gelatin silver print
 Monash Gallery of Art, City of Monash Collection
 acquired 2013
 MGA 2013.159
- 50 **Joachim FROESE**
 born Canada 1961; Germany 1966–91; arrived Australia 1991
Rhopography #20 1999–2001
 three gelatin silver prints on aluminum
 Monash Gallery of Art, City of Monash Collection
 acquired 2010
 MGA 2011.059.a–c
- 51 **Ingeborg TYSEN**
 born Netherlands 1945; arrived Australia 1957; died 2002
Colorado 1982
 from the series *Billboards* 1981–82
 gelatin silver print
 Monash Gallery of Art, City of Monash Collection
 donated by John F Williams 2013
 MGA 2013.077
- 52 **Wesley STACEY**
 born Australia 1941
Untitled 1973
 from the series *Friends*
 gelatin silver print
 Monash Gallery of Art, City of Monash Collection
 donated by Bill Bowness 2013
 MGA 2013.152
- 53 **Wesley STACEY**
 born Australia 1941
Untitled 1973
 from the series *Friends*
 gelatin silver print
 Monash Gallery of Art, City of Monash Collection
 donated by Bill Bowness 2013
 MGA 2013.153



- 54 **Wesley STACEY**
born Australia 1941
Untitled c. 1975–80
from the series *Mumbulla set*
gelatin silver print
Monash Gallery of Art, City of Monash Collection
donated through the Australian Government's Cultural
Gifts Program by Christine Godden 2011
MGA 2011.132



- 55 **Wesley STACEY**
born Australia 1941
Untitled 1973
from the series *Friends*
gelatin silver print
Monash Gallery of Art, City of Monash Collection
donated by Bill Bowness 2013
MGA 2013.149



- 56 **Wesley STACEY**
born Australia 1941
Untitled 1973
from the series *Friends*
gelatin silver print
Monash Gallery of Art, City of Monash Collection
donated by Bill Bowness 2013
MGA 2013.139



- 57 **Wesley STACEY**
born Australia 1941
Koorie mates in the tea trees 1980
from the series *Koorie set*
gelatin silver print
Monash Gallery of Art, City of Monash Collection
donated through the Australian Government's Cultural
Gifts Program by Christine Godden 2012
MGA 2012.063



- 58 **Wesley STACEY**
born Australia 1941
Untitled 1973
from the series *Friends*
gelatin silver print
Monash Gallery of Art, City of Monash Collection
donated by Bill Bowness 2013
MGA 2013.151



- 59 **Wesley STACEY**
born Australia 1941
Untitled c. 1975–80
from the series *Mumbulla set*
gelatin silver print
Monash Gallery of Art, City of Monash Collection
donated through the Australian Government's Cultural
Gifts Program by Christine Godden 2011
MGA 2011.124



- 60 **Wesley STACEY**
born Australia 1941
Untitled 1973
from the series *Friends*
gelatin silver print
Monash Gallery of Art, City of Monash Collection
doted by Bill Bowness 2013
MGA 2013.150



- 61 **Wesley STACEY**
born Australia 1941
Willie near Mallacoota 1979
from the series *Koorie set*
gelatin silver print
Monash Gallery of Art, City of Monash Collection
donated through the Australian Government's Cultural
Gifts Program by Christine Godden 2011
MGA 2011.121



- 62 **Wesley STACEY**
born Australia 1941
Untitled 1973
from the series *Friends*
gelatin silver print
Monash Gallery of Art, City of Monash Collection
doted by Bill Bowness 2013
MGA 2013.148



- 63 **Wesley STACEY**
born Australia 1941
Creek bed in Mumbulla 1979–80
from the series *Mumbulla set*
gelatin silver print
Monash Gallery of Art, City of Monash Collection
donated through the Australian Government's Cultural
Gifts Program by Christine Godden 2011
MGA 2011.136



- 64 **Wesley STACEY**
born Australia 1941
Untitled 1973
from the series *Friends*
gelatin silver print
Monash Gallery of Art, City of Monash Collection
doted by Bill Bowness 2013
MGA 2013.140



65 **Wesley STACEY**

born Australia 1941

Untitled c. 1975–80

from the series *Mumbulla set*

gelatin silver print

Monash Gallery of Art, City of Monash Collection

donated through the Australian Government's Cultural Gifts Program by Christine Godden 2011

MGA 2011.137



66 **Samuel SWEET**

born United Kingdom 1825; arrived Australia 1863; died 1886

Aboriginal camp, Point McLeay, South Australia 1880

albumen print

Monash Gallery of Art, City of Monash Collection

acquired 2013

MGA 2013.155



67 **Matthew SLEETH**

born Australia 1972

Here to stay 1998

gelatin silver print

Monash Gallery of Art, City of Monash Collection

donated by Ian Sleeth through the Australian Government's Cultural Gifts Program 2005

MGA 2005.39.50



68 **Mark STRIZIC**

born Germany 1928; arrived Australia 1950; died 2012

An international brigade, 1971 1971

gelatin silver print, printed 1974

Monash Gallery of Art, City of Monash Collection

donated by the Bowness Family through the Australian Government's Cultural Gifts Program 2008

MGA 2008.114



69 **Mark STRIZIC**

born Germany 1928; arrived Australia 1950; died 2012

Thistles, 1963 1963

gelatin silver print

Monash Gallery of Art, City of Monash Collection

donated by the Bowness Family through the Australian Government's Cultural Gifts Program 2008

MGA 2008.120



70 **Phillip J PIKE**

dates unknown

Untitled (publicity still from Charles Chauvel's *Jedda*) c. 1954

gelatin silver print

Monash Gallery of Art, City of Monash Collection

donated through the Australian Government's Cultural Gifts

Program by Richard King in memory of Murray Stewart Smith 2008

MGA 2008.280



- 71 **Samuel SWEET**
born United Kingdom 1825; arrived Australia 1863; died 1886
Butterfly (Kangaroo) Valley, Hobart, February 1883 1883
albumen print
Monash Gallery of Art, City of Monash Collection
acquired 1989
MGA 1989.36



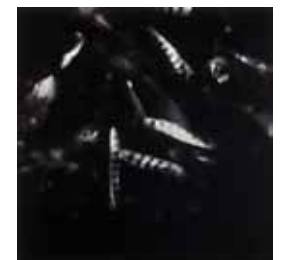
- 72 **Mark STRIZIC**
born Germany 1928; arrived Australia 1950; died 2012
Reverie 1979
from the series *The fall of the shadow*
silver dye bleach print, printed 1983
Monash Gallery of Art, City of Monash Collection
acquired 1991
MGA 1991.17



- 73 **Harry NANKIN**
born Australia 1953
Cathexis / fragment 13 1993
toned gelatin silver print
Monash Gallery of Art, City of Monash Collection
donated by Tina Smyrnios through the Australian
Government's Cultural Gifts Program 2002
MGA 2002.15



- 74 **Harry NANKIN**
born Australia 1953
Cathexis / fragment 14 1993
toned gelatin silver print
Monash Gallery of Art, City of Monash Collection
donated by Tina Smyrnios through the Australian
Government's Cultural Gifts Program 2002
MGA 2002.16



- 75 **Albert TUCKER**
Australia 1914–99
John and Sunday Reed birdwatching 1946
gelatin silver print, printed 1998
Monash Gallery of Art, City of Monash Collection
donated by Barbara Tucker 2001
MGA 2001.10



- 76 **Ian HOWARD**
born Australia 1947
Out of the cities of hope 1990
silver dye bleach print
Monash Gallery of Art, City of Monash Collection
acquired 1990
MGA 1990.25



77 **David MOORE**

Australia 1927–2003

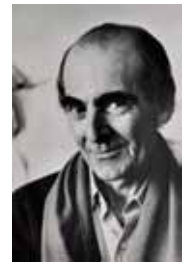
Robert Klippel, sculptor, Birchgrove, Sydney 1979

gelatin silver print, printed 2005

Monash Gallery of Art, City of Monash Collection

donated by the Estate of David Moore 2006

MGA 2006.114



78 **Ian HOWARD**

born Australia 1947

Figure with shells (Budapest) 1984

chromogenic print and frame

Monash Gallery of Art, City of Monash Collection

donated by Charles Nodrum 2010

MGA 2010.042



79 **Sonia PAYES**

born Australia 1956

Robert Rooney 2005

chromogenic print

Monash Gallery of Art, City of Monash Collection

donated through the Australian Government's Cultural Gifts Program by the Bowness Family 2010

MGA 2010.017



80 **Beverley VEASEY**

born Australia 1968

Study of a swan, *Cygnus bewickii* 2006

chromogenic print

Monash Gallery of Art, City of Monash Collection

acquired 2006

MGA 2006.35



81 **George J MORRIS**

Australia 1884–1959

Nürnberg, Germany 1936

gelatin silver print, printed 1983

Monash Gallery of Art, City of Monash Collection

donated through the Australian Government's Cultural Gifts Program by Richard King in memory of Murray Stewart Smith 2008

MGA 2008.328



82 **George J MORRIS**

Australia 1884–1959

Venetian canal, Venice 1936

gelatin silver print, printed 1983

Monash Gallery of Art, City of Monash Collection

donated through the Australian Government's Cultural Gifts Program by Richard King in memory of Murray Stewart Smith 2008

MGA 2008.338



- 83 **George J MORRIS**
Australia 1884–1959
Siesta, Venice 1936
gelatin silver print, printed 1983
Monash Gallery of Art, City of Monash Collection
donated through the Australian Government's Cultural Gifts
Program by Richard King in memory of Murray Stewart Smith 2008
MGA 2008.344
- 84 **George J MORRIS**
Australia 1884–1959
Fishermen, Polperro 1936
gelatin silver print, printed 1983
Monash Gallery of Art, City of Monash Collection
donated through the Australian Government's Cultural Gifts
Program by Richard King in memory of Murray Stewart Smith 2008
MGA 2008.329
- 85 **Fred KRUGER**
born Germany 1831; arrived Australia 1860; died 1888
Untitled c. 1870–80
albumen print
Monash Gallery of Art, City of Monash Collection
acquired 1991
MGA 1990.39
- 86 **Doug SPOWART**
born Australia 1953
South of the border, Woomera 1983
sepia-toned gelatin silver print, printed 1986
Monash Gallery of Art, City of Monash Collection
acquired 1986
MGA 1986.44
- 86 **Fred KRUGER**
born Germany 1831; arrived Australia 1860; died 1888
Queen Mary and King Billy outside their mia mia c. 1880
albumen print
Monash Gallery of Art, City of Monash Collection
acquired 2012
MGA 2012.090
- 86 **Wesley STACEY**
born Australia 1941
The road 1974–75
288 chromogenic prints in 19 spiral bound books and suitcase
Monash Gallery of Art, City of Monash Collection
acquired 2012
MGA 2013.001–019



MGA would like to acknowledge and thank the artists for permission to reproduce images in this exhibition list and the following people/organisations: Sue Ford Archive (Melbourne) for Sue Ford, Jan Manton Art (Brisbane) for Joachim Froese, Charles Nodrum Gallery (Melbourne) for Ian Howard, Estate of David Moore (Sydney) for David Moore, Stills Gallery (Sydney) for Trent Parke, Claire Oliver Gallery (New York) for Matthew Sleeth, Sue Strizic for Mark Strizic, Sullivan + Strumpt (Sydney) for Darren Sylvester and John F Williams for Ingeborg Tyssen. Every effort has been made to contact all copyright owners for this exhibition.